

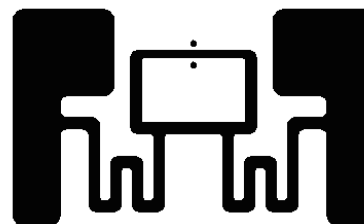
CT3050U8

INLAY 3050U8 CENTAUR (HALF MAN HALF HORSE)

SIZE : 30 X 50MM

PRODUCT DESCRIPTION

- PART NO.: INLAY 3050U8 CENTAUR (HALF MAN HALF HORSE)
- INLAY DIMENSIONS: 30 x 50mm / 1.18 x1.97" +/- .5mm
- ANTENNA: AL (9µm) + PAPER (50µm)
LASER CUTTING ALUMINUM (9 µm) + PAPER (50 µm)
- PROTOCOL: ISO 18000-6C EPC Class1 Gen2
- **CHIP:** NXP / UCODE8
- FREQUENCY +/-5%: 860~960MHz
- OPERATING MODE: Passive



FORM FACTORS

1K = 1,000 LABELS

DRY INLAY	Inlay is delivered with no adhesive for application
WET INLAY	Inlay arrives with adhesive in place for application
PAPER FACE	Inlay is applied to an adhesive label or integrated hangtag
WEL (WIDE EDGE LEADING)	In roll form inlay is presented with wide edge leading
NEL (NARROW EDGE LEADING)	In roll form inlay is presented with narrow edge leading
ELEVATED OPTIONS	This inlay can be applied to just about any of our products, please inquire for more details

ENVIRONMENT REQUIREMENTS

- Keep dry
- Do not expose to direct sunlight
- Recommended storage temperature: 20-30 °C
- Humidity condition: 5-60%
- RF circuits have no expiration date when stored in recommended conditions. However, the adhesive has a useful working life of 1 year from the date of manufacture in anti-static bag at 20-30°C